

# PSEC

Annual Report

# 2021

**Service to  
communities**  
with compassion  
and innovation







**Presbyterian Support**  
East Coast

***Te Matakite***

*E nanaio ana te pito mata o  
ngā hāpori.*

***Te Kawenga***

*Me māia, me kumanu te  
arahanga i te panoni pāpori.*

***Ngā Whanonga pono***

*Kia ngākau aroha, kia auaha te  
tuku ratonga ki ngā hāpori.*

***Our vision***

*Communities reaching their  
potential.*

***Our mission***

*Lead social change with  
courage and care.*

***Our values***

*Service to communities with  
compassion and innovation.*







# Weaving communities together



## This past year at PSEC has been characterised by resilience.

We celebrate the resilience of the many communities that we work with on the East Coast: Enliven clients in their own homes and attending day programmes, Family Works children and whānau, Enliven Disability flatters and students. Each community has its own different characteristics and challenges. What is common to all is the aspiration to reach their potential, and that is where PSEC comes in.

We have been walking alongside our communities on the East Coast, offering professional service, compassion, and innovation for 75 years. This anniversary milestone prompts us not only to acknowledge our heritage, but also to reassess and adapt so we keep pace with a changing world. As part of this development process, we will be focusing on our sustainability journey over the next year.

We are grateful to our governors, the PSEC Board, for imparting their skills and guidance over the last year. With their support, our staff, volunteers, and contractors completed another successful year providing services to clients.

Our thanks this year also goes to funders – individual donors, trusts and government agencies – for their financial support and belief in us during the challenges of the pandemic. Their support has been vital to PSEC and will be even more important in future.

I encourage you to join with us as we work to create healthy communities and a sustainable environment for our children and their children.

*Sanja Majstorović, CEO*

## This has been a year of relative calm, even if under the ever-present shadow of COVID-19.

While the latest restrictions have delayed our planned strategic review, we look forward to re-evaluating our focus later this year with the added benefit of wisdom from pandemic challenges and successes.

PSEC has not been daunted by these challenges, evidenced by the ongoing tireless efforts of Sanja and her team. They continue to provide compassionate, innovative service to our communities. Thank you all.

The organisation remains well-resourced and our thanks also go to those who contribute to this. Due to changing demographics and immigration constraints nationwide, the demand for compassionate, skilled staff is a growing challenge for management and Board.

I would like to make special mention of some Board colleagues.

Our past Chairman Maitland Manning gave eleven years of selfless service to the PSEC Board and has been acknowledged with a Life Membership.

We farewell two well-respected Board members this year, Frané Rosandich and Julie Ball.

Frané joined the PSEC Board in 2005. He also remains on the Cranford Hospice Board following PSEC gifting this service to the community in 2017. Julie has brought health sector expertise to the Board and has been a strong champion for health and safety within the organisation.

Finally, my personal thanks to all Board members for their efforts and support throughout the year.

*Stuart Signal, CHAIRMAN*

# Our Board



**Stuart Signal**  
*Chairman*  
FCA, BBS, M Inst D



**Alison Prins**  
*Deputy Chair*



**Julie Ball**  
Dip. Physio, Dip Bus Stud  
(Dispute Resolution)



**Ken Foote**  
ONZM, ED\*\*\*, JP, BCA, Dip Bus Stud  
(Dispute Resolution), M Inst D



**Warren Hokke**  
BCA, CA (ret'd), PG Dip Bus  
Admin, NZ Cert in Te Reo (L3)



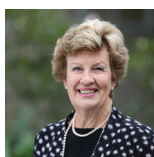
**David McDonald**  
LLB, Dip Bus Stud  
(Dispute Resolution)



**Rani Morunga**  
BA Criminology and Māori  
Resource Mgmt; Masters



**Frané Rosandich**  
BA Psychology, BA Social Work



**Colleen Skuse**



**Tobias Taylor**  
CFP, AFA, PGDipPFP,  
BBS, M Inst D



**Kerry Marshall**  
*Our Patron*  
QSM, FCA (retired), Dip BS  
(Information Systems)

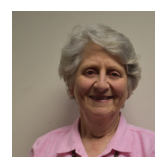
## Arohiwi Station Board



**Peter Tod**  
*Chairperson*



**Sandra Faulkner**



**Marie Burgess**



**Robbie Schaw**  
*Farm Manager*





# Thank you



*To our supporters and donors not individually mentioned,  
thank you for your gifted time, donations, prayers and moral support.  
Without your support we could not serve the people of the East Coast region who need our help most.*

## BEQUESTS

PSEC was grateful this year to receive bequests from these kind people who chose to include a gift in their Will to:

## ENLIVEN OLDER PEOPLE SERVICES

Dorothy May Beavan

## PRESBYTERIAN SUPPORT EAST COAST

James Ashley Ineson

## GRANTS

During the year, generous grants were received from the following:-

## ENLIVEN DISABILITY SERVICES MOSAIC

Four Winds Foundation Ltd  
Harry Otton Charitable Trust  
NZ Lottery Grants Board COVID-19 Community Wellbeing Fund  
Napier City Council  
Napier City Council – Creative Communities Scheme  
One Foundation Ltd  
Pub Charity Ltd

## ROWAN

Gwen Malden Charitable Trust  
The Kingdom Foundation

## ENLIVEN OLDER PEOPLE SERVICES

Estate of Helen Stewart Royle Charitable Trust  
Hastings District Council  
Higgins Bequest Trust  
NZ Lottery Grants Board  
Royston Health Trust  
St Joans Charitable Trust

## FAMILY WORKS HAWKE'S BAY

Anstiss-Garland Charitable Trust  
First Light Community Foundation  
Frimley Foundation  
Hawke's Bay Children's Holding Trust  
Hawke's Bay Foundation  
NZ Lottery Grants Board  
The Lion Foundation  
The Presbyterian Church Properties Trust  
The Tindall Foundation  
Trust House Foundation

## FAMILY WORKS TAIRĀWHITI

NZ Lottery Grants Board  
Oranga Tamariki – Ministry for Children  
The Presbyterian Church Properties Trust

## TAUAWHI MEN'S CENTRE

J N Williams Memorial Trust & H B Williams Turanga Trust  
Manatū Wāhine – Ministry for Women

The Sunrise Foundation

The Tindall Foundation

Trust Tairāwhiti

## PRESBYTERIAN SUPPORT EAST COAST

Ministry of Social Development — Community Capability and Resilience Fund

## PARISHES

We wish to acknowledge and thank Presbyterian Churches and parishioners throughout the region for their loyal support and donations of \$37,019 to Presbyterian Support East Coast or its services over the past year.

## CHARITY SHOPS

Our retail managers and volunteers in our charity shops work tirelessly to contribute a significant amount each year so that our vital community services remain free for those who need them. Thank you!

## LIFE MEMBERS

Mr Jack Mackie  
Dr Anne Denton  
Mr John Gould  
Mrs Barbara Hodgson  
Rev Nolan Martin  
Ms Marie Burgess  
Mr Michael König  
Mr Maitland Manning









# Enliven Disability Services



## Rowan (Enliven Disability Residential Service) is a residential service for people under 65 with a physical disability.

Rowan aims to create an atmosphere that fosters adult choice, responsibility and independence. Over the 2020-21 financial year Rowan was home for 22 flatters (11 men, 11 women).

### Rowan client satisfaction survey 2020-21 (14 respondents)

Living at Rowan makes a positive difference to my life.  
I choose what I want to do in the wider community and how to do it.  
I am making progress towards achieving my goals.  
I am as independent and in control of my life as I want to be.  
I feel supported and confident to make decisions (for myself, about myself)  
Rowan provides a safe and homelike place for me to live.



## Mosaic (Enliven Disability Community Service) is a community-based day educational service, creative art space and life-skill education centre for younger people with a disability.

**51** clients

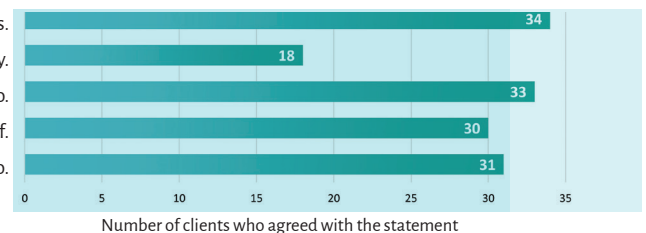
**9,720** student hours on-site

**2,700** hours participating in the community

**226** enrolments in literacy, numeracy and digital literacy courses

### Mosaic client satisfaction survey 2020-21 (34 respondents)

I am pleased with the things I have achieved at Mosaic in the last 12 months.  
Through Mosaic I do more things in the community.  
At Mosaic I can choose what I do.  
I am encouraged to do more things for myself.  
Since I've been coming to Mosaic I feel more confident about what I can do.



**It's a good place, a cool place.  
I like coming here. I like good  
friends and the tutors.**

**I like the people here and the staff, I  
think it's absolutely fantastic what the  
staff does, they're all lovely people.**









# Enliven Older People Services



## Enliven Intensive Home Support

is based on restoring the physical, mental and social well-being of older people so they can stay in their own home for as long as possible.

**285** people (170 women, 115 men) supported to remain in their own homes

**100%** of clients supported by a multi-disciplinary team including social workers, therapists and dietitians

**81%** of Key Support Workers qualified at NZQA Level 2 or higher, 70% at Level 3 and above

**99,347** hours of in-home support provided by Key Support Workers

You have made such a difference to our lives, and both my husband and I say thank you.

Wonderful support to stay in our home.

The Enliven nurse gives excellent support, I think my health would not be so good without her. Always available to go the extra mile. I have deep appreciation for all she does.

## Enliven: Community Strength & Balance Lead Agency

**74** programmes active across Hawke's Bay and Tairāwhiti

**1420** places offered per week (average across the year)

**34,500+** attendances for the year

**492** people attended a programme for the first time

## Enliven Community Services

provides day respite services for individuals living in Napier, Hastings, Havelock North, Waipawa, Takapau and Porangahau.

**95%** of participants agreed that the Day Programme helps them to stay active

**91%** agreed that the Day Programme helps them maintain their independence

**94%** agreed the programme helps them to feel socially connected

**89%** agreed that the Day Programme has made a positive difference in their life

Thank you so much, it has made a great help to my life. Exercises are very beneficial to me.

Just keep this wonderful programme going.

You do a VERY good job. I am so grateful.









# Family Works East Coast



## Family Works East Coast

provides services for children and their families/whānau, and individuals who are facing parenting challenges, child abuse and neglect and family violence.

Our team provides confidential advice and support including counselling, social work interventions and education programmes. We work collaboratively with local community groups and services.

**1,628** people received social services

**1,384** new enrolments were received

- ◆ **414** new enrolments for casework and/or counselling services
- ◆ **833** new enrolments into programmes and support groups
- ◆ **137** other new enrolments

*Based on 168 service evaluations by adult clients who completed their engagement or programme with Family Works:*

**93%**

of clients reported that the service helped them meet their goals

**96%**

learned new skills and strategies

**99%**

were satisfied with the services

**93%**

felt better prepared for the future

It's awesome that this course is available to us here in prison - thank you team.

I am leaving with new skills to keep myself safe and I know myself as a person better.

Kind, caring, empathetic, active listening.

Staff have gone above and beyond to help us as a whānau.

It helped me understand my boys better and made our communication the best.









# Tauawhi Men's Centre



## Tauawhi, Tairāwhiti Men's Centre

provides a visible, accessible and inclusive environment for men to access support to improve their wellbeing, family relationships and community.

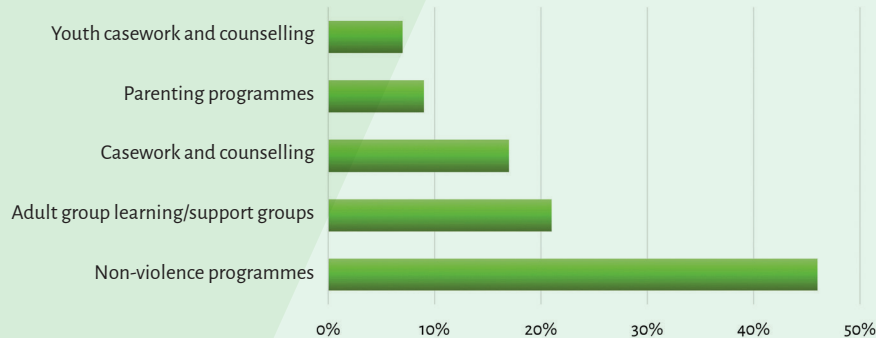
Tauawhi has a strong focus on reducing the incidence of family violence in the Tairāwhiti community by addressing underlying causes at both individual and social levels.

**498** people received social services

**508** new enrolments into services and programmes were received

\* Clients may enrol in several services or programmes over time.

### Tauawhi enrolment by service



Cultural protocol, acceptance, non-judgement.

It is extremely worthwhile and in-depth.

The sharing, the respectful environment, the wisdom which sits in the room.

Listening to others' stories and finding that others are struggling more than yourself.

Expression, conversation, whanaungatanga, kawa.

Talking with other men about my issues and not being judged.

It is perfectly suited to my needs, best space for tāne to share their issues and learn skills. Has greatly improved my life and growth personally.

It really helped me with my partner and whānau, how to defuse a disagreement.

It shows you how to deal with some of your bad habits and for a better outcome for your babies.

Strong support network.



# Financial summary



Summary Consolidated Financial Statements for the year ended 30 June 2021

CONSOLIDATED STATEMENT OF COMPREHENSIVE REVENUE AND EXPENSE FOR THE YEAR ENDED 30 JUNE 2021	2021 \$'000's	2020 \$'000's
<b>OPERATING INCOME AND EXPENDITURE</b>		
Revenue from Operations, and other Income	14,106	14,767
Total Expenses	(15,191)	(14,374)
<b>Operating Surplus / (Deficit)</b>	<b>(1,085)</b>	<b>393</b>
Finance Income	20	29
Movement in Fair Value of Investments in Managed Funds	2,750	771
Movement in Fair Value of Non-Financial Assets	2,289	655
<b>Total Comprehensive Revenue and Expense</b>	<b>3,974</b>	<b>1,848</b>

CONSOLIDATED STATEMENT OF CHANGES IN NET ASSETS/EQUITY FOR THE YEAR ENDED 30 JUNE 2021	2021 \$'000's	2020 \$'000's
Balance as at 1 July	52,511	50,663
Total Comprehensive Revenue and Expense	3,974	1,848
<b>Balance as at 30 June</b>	<b>56,485</b>	<b>52,511</b>
<b>Comprising:</b>		
Revaluation Surplus	9,440	9,440
Accumulated Revenue and Expense	47,045	43,071
<b>Total Net Assets / Equity</b>	<b>56,485</b>	<b>52,511</b>



# Financial summary



## Summary Consolidated Financial Statements for the year ended 30 June 2021

CONSOLIDATED STATEMENT OF FINANCIAL POSITION AS AT 30 JUNE 2021	2021 \$000's	2020 \$000's
Current Assets	24,629	23,284
Non-Current Assets	34,354	31,920
<b>Total Assets</b>	<b>58,983</b>	<b>55,204</b>
Current Liabilities	2,498	2,693
<b>Total Liabilities</b>	<b>2,498</b>	<b>2,693</b>
<b>Net Assets /Equity</b>	<b>56,485</b>	<b>52,511</b>

CONSOLIDATED CASH FLOW STATEMENT FOR THE YEAR ENDED 30 JUNE 2021	2021 \$000's	2020 \$000's
Net Cash Inflow / (Outflow) from Operating Activities	(1,112)	1,307
Net Cash Inflow / (Outflow) from Investing Activities	472	(154)
<b>Net Increase/(Decrease) in Cash and Cash Equivalents</b>	<b>(640)</b>	<b>1,153</b>
Cash and Cash Equivalents at the Beginning of the Year	3,874	2,721
<b>Cash and Cash Equivalents at the End of the Year</b>	<b>3,234</b>	<b>3,874</b>

These summary consolidated financial statements have been extracted from the full consolidated financial statements. They comply with Public Benefit Entity Accounting Standards Reduced Disclosure Regime (PBE Standards RDR) as they relate to summary consolidated financial statements. All figures are in NZ\$ and rounded to the nearest thousands.

The full consolidated financial statements were authorised for issue by the Trustees on 22nd September 2021.

The full consolidated financial statements have been prepared in accordance with PBE Standards RDR and they comply in full with those Standards.

The summary consolidated financial statements do not include all the disclosures provided in the full consolidated financial statements and cannot be expected to provide as complete an understanding as provided by the full consolidated financial statements.

The full consolidated financial statements have been audited and an unmodified opinion was expressed over all periods presented in these summary consolidated financial statements.

A full set of the audited consolidated financial statements is available from: The Chief Executive Office, PO Box 8119, Havelock North. Telephone 06 877 8193.

### Auditor's Report

To the Readers of the Summary Consolidated Financial Statements of Presbyterian Support East Coast. In our opinion the "Consolidated Summary Financial Statements" have been correctly extracted from, and are consistent with, the current annual consolidated financial statements for Presbyterian Support East Coast.

Our audit of the consolidated financial statements for the year ended 30 June 2021 was completed on 22 September 2021 and our unmodified opinion was expressed as at that date.

For a better understanding of Presbyterian Support East Coast's consolidated financial position and the results for the period, the summary consolidated financial statements should be read in conjunction with the related annual audited consolidated financial statements.

*BDO Hawke's Bay*

BDO Hawke's Bay  
Napier, New Zealand  
22 September 2021







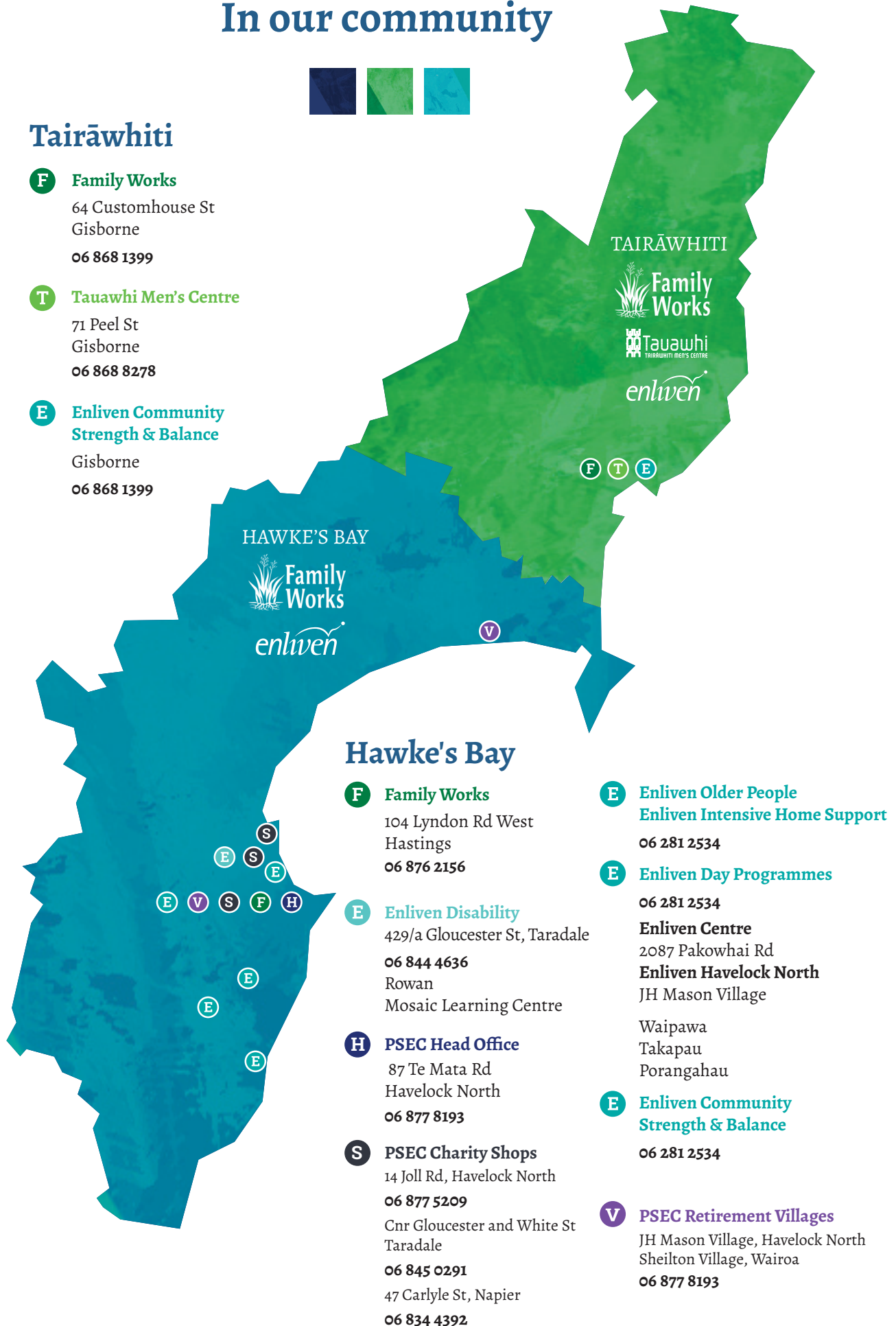
Presbyterian Support  
East Coast

## In our community



### Tairāwhiti

- F** **Family Works**  
64 Customhouse St  
Gisborne  
06 868 1399
- T** **Tauawhi Men's Centre**  
71 Peel St  
Gisborne  
06 868 8278
- E** **Enliven Community  
Strength & Balance**  
Gisborne  
06 868 1399



### Hawke's Bay

- F** **Family Works**  
104 Lyndon Rd West  
Hastings  
06 876 2156
- E** **Enliven Disability**  
429/a Gloucester St, Taradale  
06 844 4636  
Rowan  
Mosaic Learning Centre
- H** **PSEC Head Office**  
87 Te Mata Rd  
Havelock North  
06 877 8193
- S** **PSEC Charity Shops**  
14 Joll Rd, Havelock North  
06 877 5209  
Cnr Gloucester and White St  
Taradale  
06 845 0291  
47 Carlyle St, Napier  
06 834 4392
- E** **Enliven Older People  
Enliven Intensive Home Support**  
06 281 2534
- E** **Enliven Day Programmes**  
06 281 2534  
**Enliven Centre**  
2087 Pakowhai Rd  
**Enliven Havelock North**  
JH Mason Village  
Waipawa  
Takapau  
Porangahau
- E** **Enliven Community  
Strength & Balance**  
06 281 2534
- V** **PSEC Retirement Villages**  
JH Mason Village, Havelock North  
Sheilton Village, Wairoa  
06 877 8193